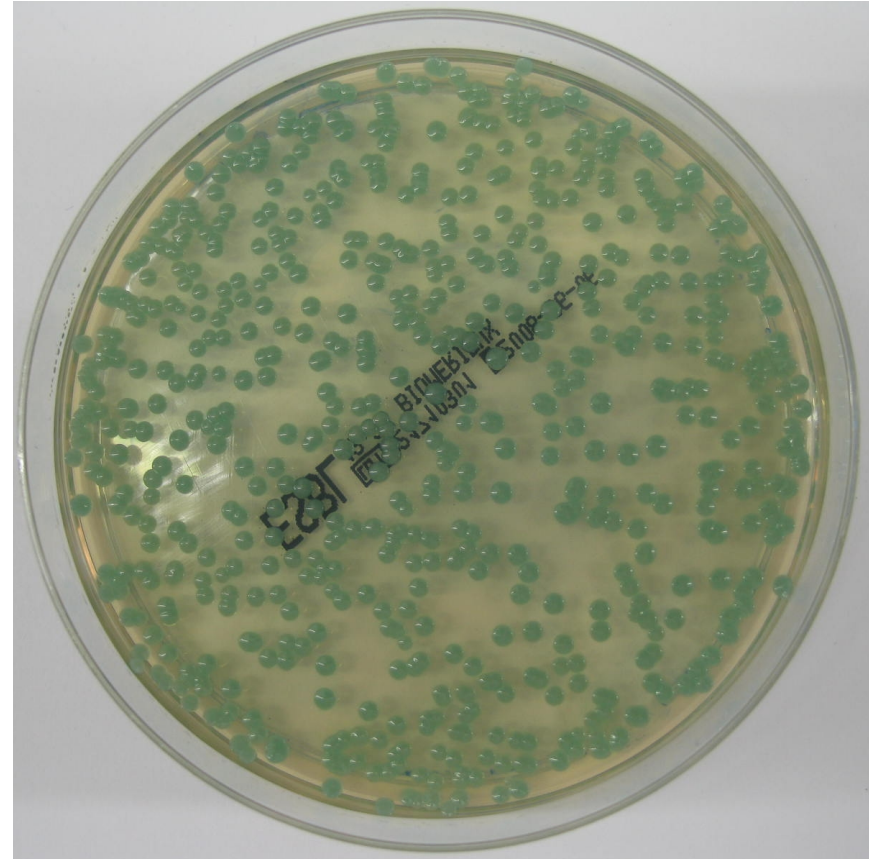
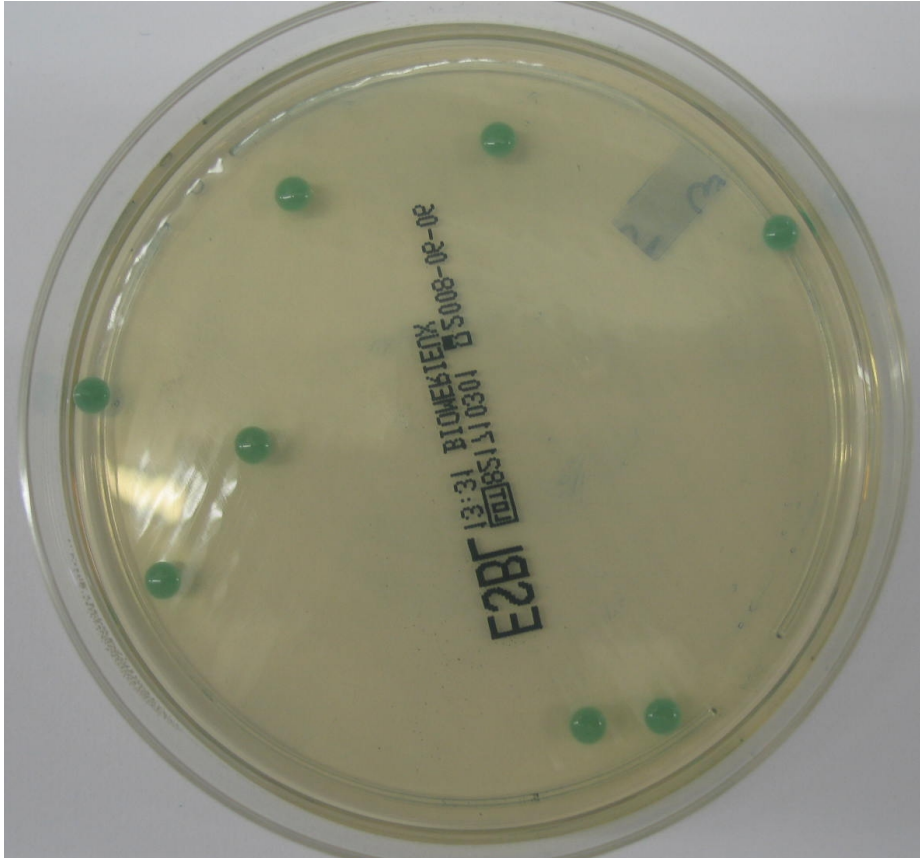


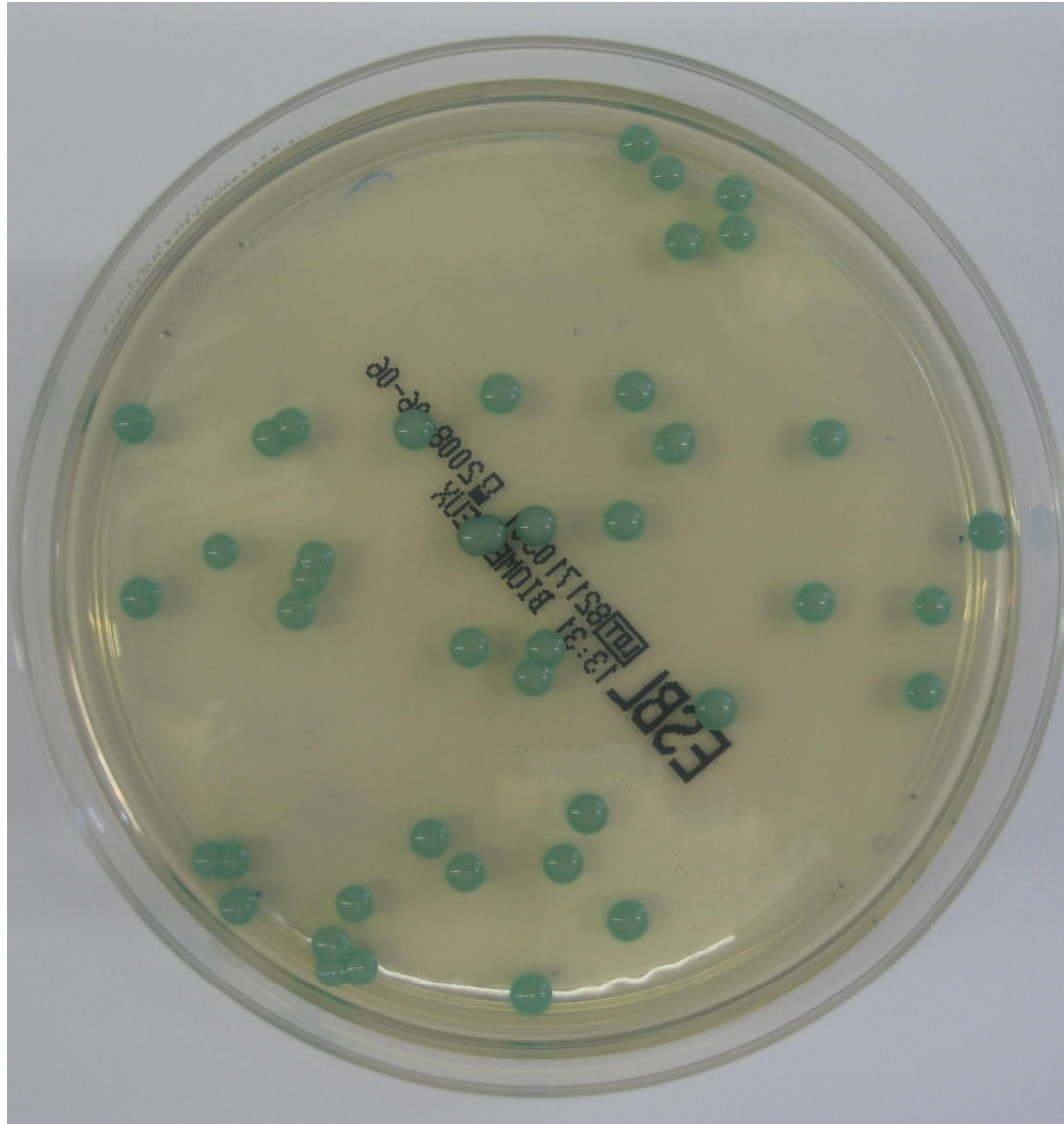
# chromID ESBL agar

- 1. dia: CTX-M-15 típusú ESBL termelő *K. pneumoniae*
- 2. dia: SHV-2a típusú ESBL-termelő *K. pneumoniae*
- 3. dia: SHV-5 típusú ESBL-termelő *K. pneumoniae*
- 4. dia: CTX-M-4 típusú ESBL-termelő *Salmonella* Enteritidis
- 5. dia: CTX-M-5 ESBL-termelő *E. coli*
- 6. dia: plazmidon kódolt AmpC-termelő *E. coli* (MIR-típus)
- 7. dia: plazmidon kódolt AmpC-termelő *P. mirabilis* (ACC-típus)
- 8. dia: MBL-termelő *P. aeruginosa* (VIM-4 típus)
- 9. dia: kromoszómán kódolt AmpC-túltermelő *E. cloacae*
- 10. dia: *E. coli* (CTX-M-5, ESBL) és *K. pneumoniae* (CTX-M-15, ESBL) különböző higítású keverékei

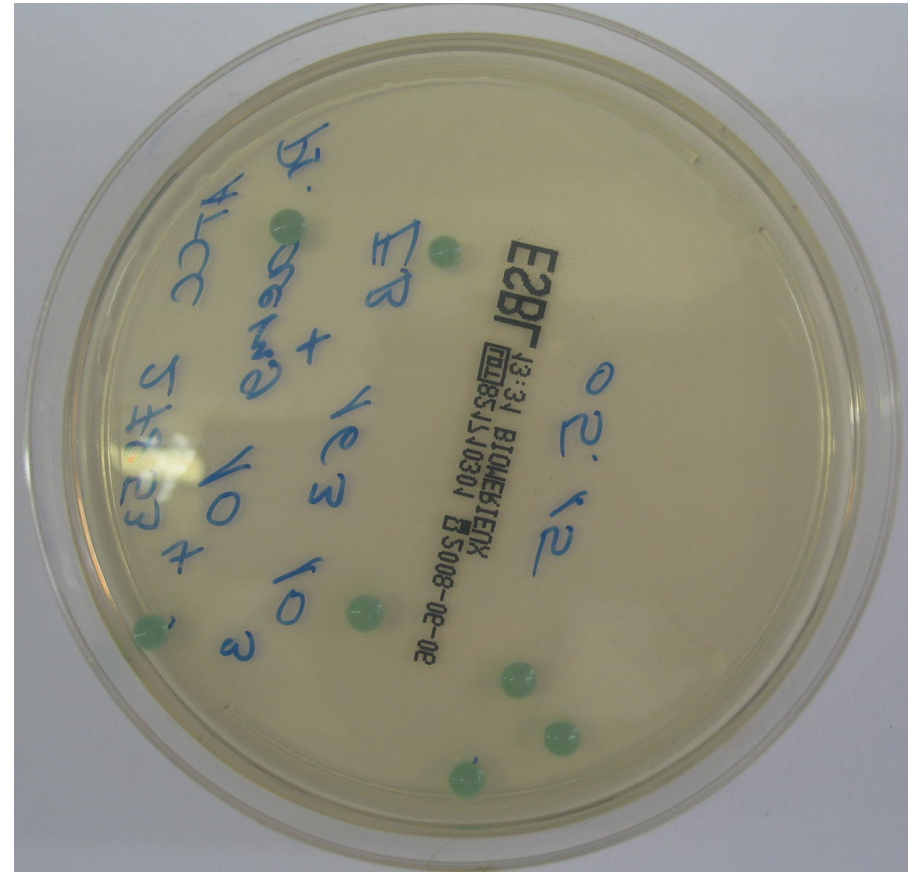
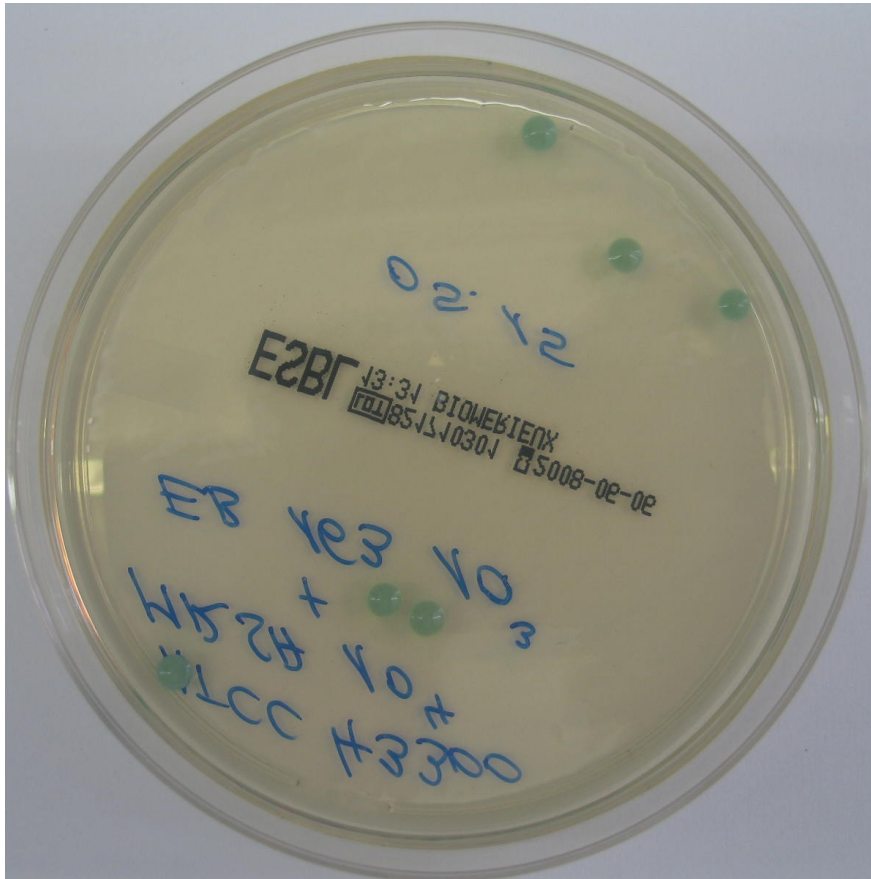
# *K. pneumoniae* (CTX-M-15, ESBL)



# *K. pneumoniae* (SHV-2a, ESBL)

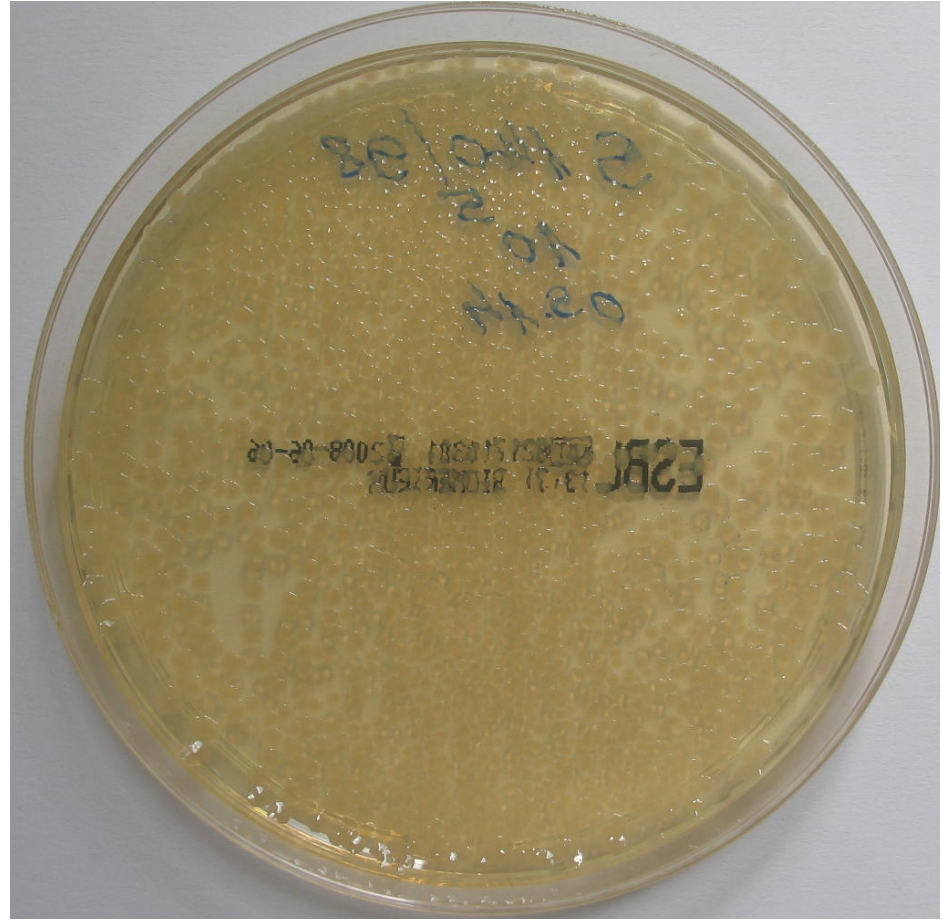
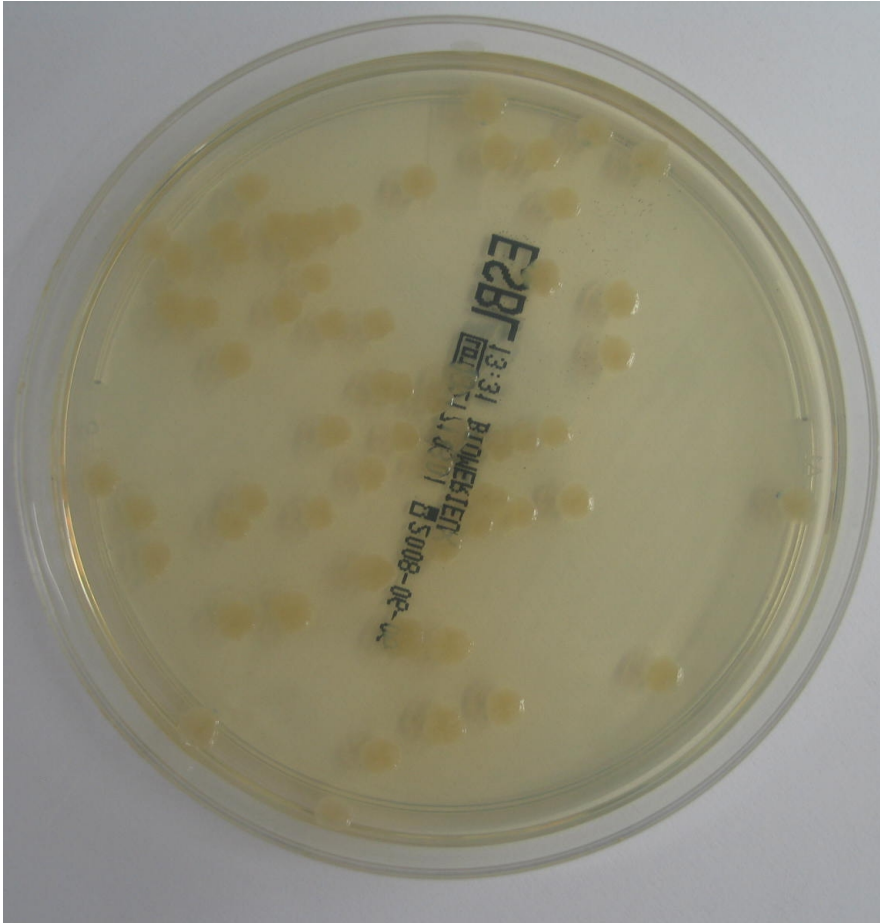


# *Klebsiella pneumoniae* (SHV-5, ESBL)

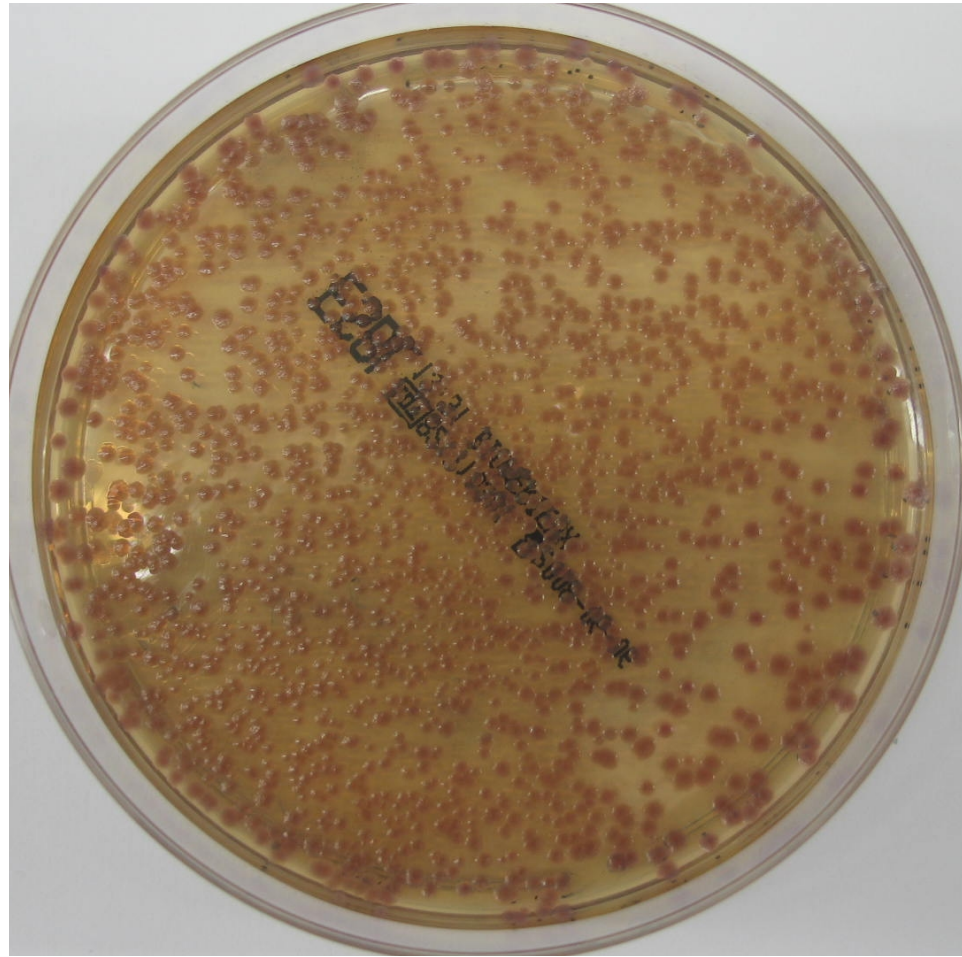
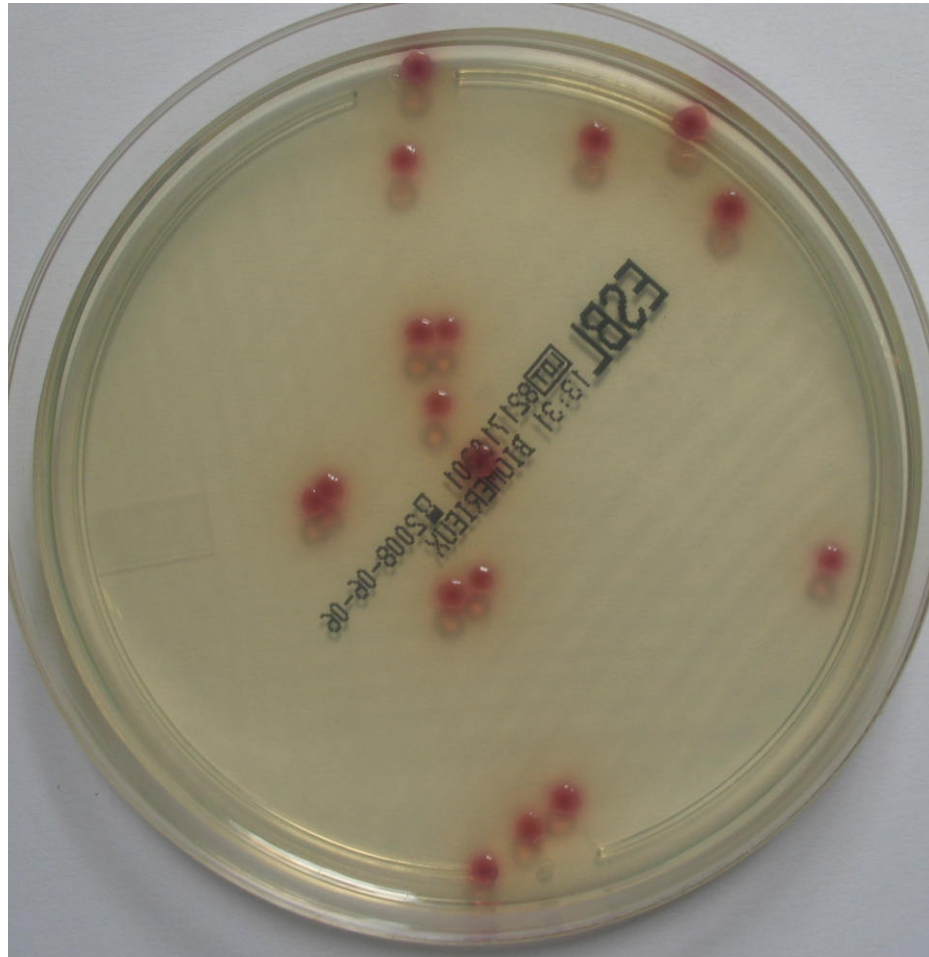




# *Salmonella* Enteritidis (CTX-M-4, ESBL)



# *E. coli* (CTX-M-5, ESBL)





# *E. coli* (MIR, plasmid AmpC)

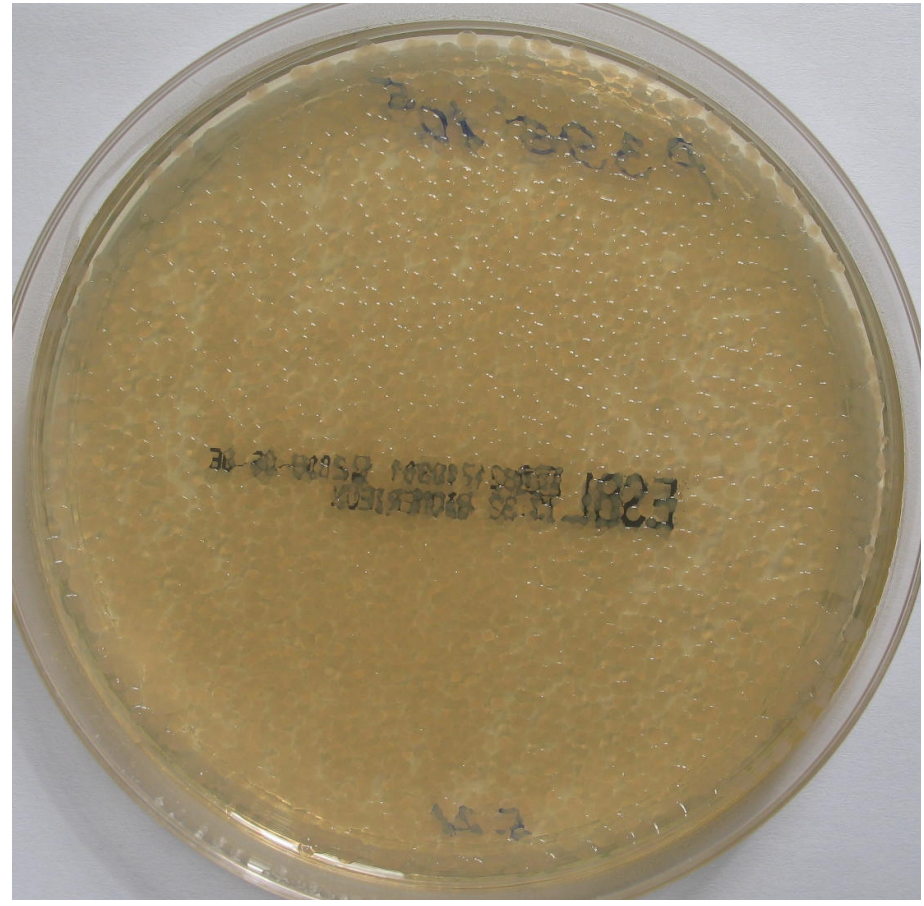
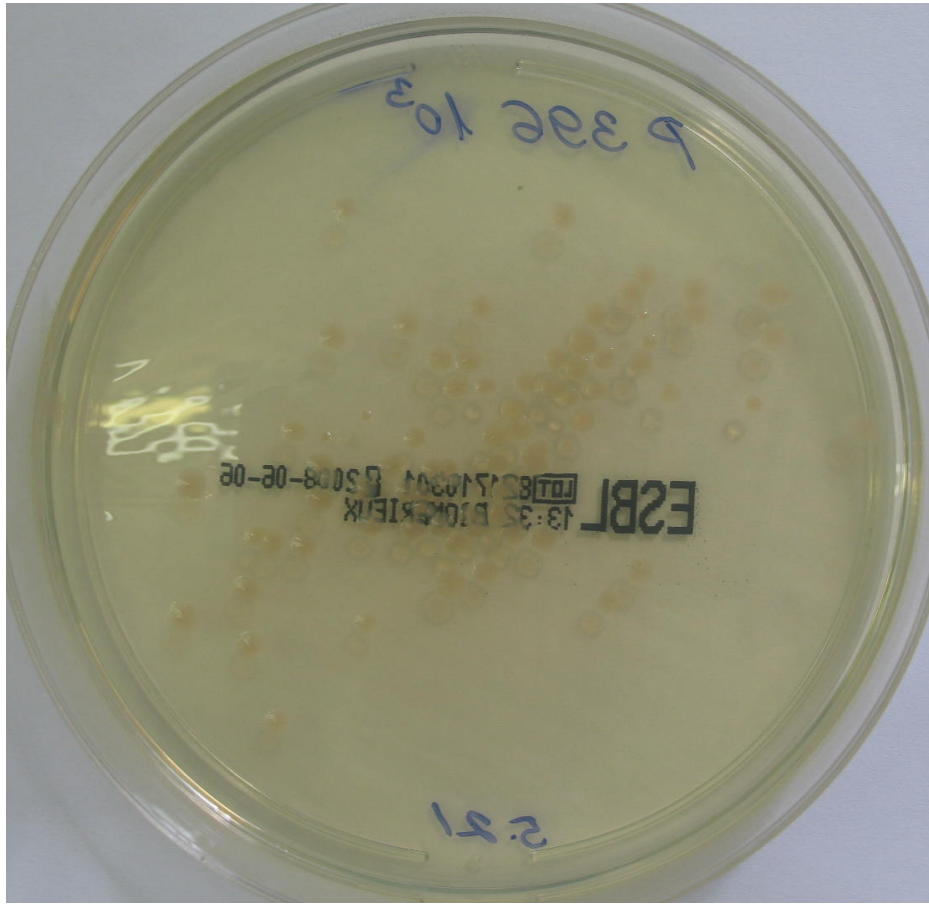


*P. mirabilis* (ACC, plazmid AmpC)



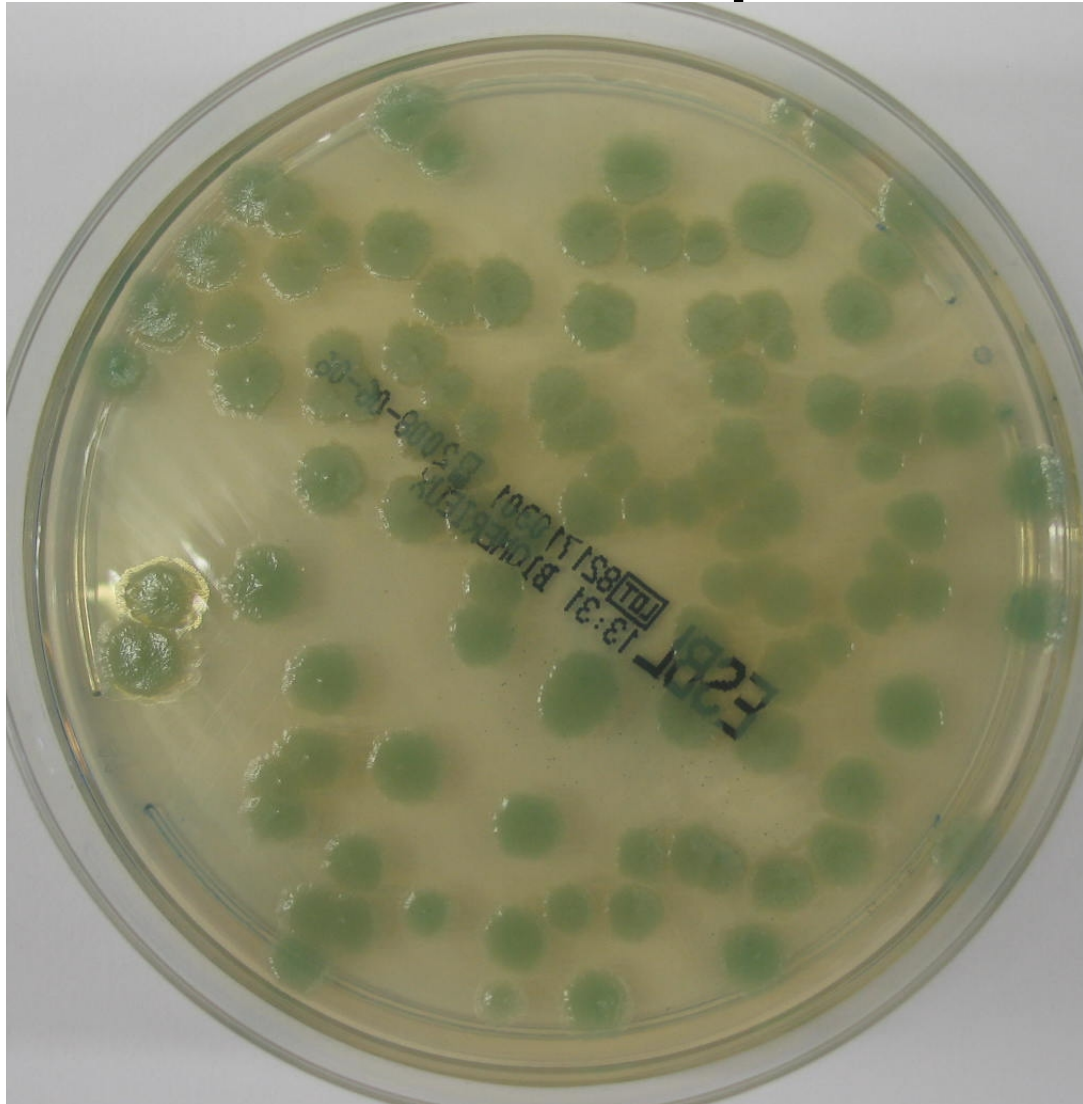


# *P. aeruginosa* (VIM-4, MBL)



*E. cloacae*

(kromoszómális AmpC-túltermelő)





*E. coli* (CTX-M-5, ESBL) és  
*K. pneumoniae* (CTX-M-15, ESBL)

